

The **V**igo Insider



Issue 2 - April 2009

New Online Job Entry System

end-to-end logistics solutions

As part of our continual program developments Vigo launched the new Online Job Entry System in Q1 of this year. At a later date this system will be migrated into the 'Customer Portal' which will give your customers one site to enter jobs and view POD track and trace data.

We have kept the look of the system as close as possible to the current version, whilst making many changes in the background to improve the overall operation for signature capture.

The improvements that are most apparent are:

- A clearer entry screen with the ability to print immediately from within that screen rather than having to change to a different screen.
- Further options to add surcharge descriptions to manifest notes and to allow/prevent the editing of these and other manifest notes.
- Upgrade routing from the depot system.
- More options to set defaults for customers and to select e.g. full halves and quarter pallets.

The main differences from the customer point of view are:

- The ability to enter collection addresses as well as delivery addresses.
- Holds details of closing times.
- More powerful address searches.



About the Vigo Online Job Entry System:

Fast and efficient, the OJE system saves both the Haulier and Customer valuable time. The system uses a web based job entry screen that allows the Customer to enter job details directly onto the web; these jobs can then be viewed and edited by both Haulier and Customer until the job has been accepted. The Haulier downloads the consignment data into their traffic system directly from the online system. The system includes and accept jobs procedure, allowing the Haulier to accept and decline Customer jobs at their discretion. The system will automatically fill out address and account details and other frequently used job information providing extremely quick job entry.

The OJE system also provides the facility to produce the necessary despatch documents, such as labels, consignment notes and dockets. The system will automatically route jobs onto your chosen vehicle or trunk and provides the relevant paperwork ensuring that deliveries arrive correctly. The system will store details of any consignments that have been decline and the reasons for the jobs being rejected. The system also features an 'Audit trail' facility that provides a record of any changes made to a consignment, the date of the changes and the user than made them.

The OJE web page is fully customisable and can be designed to reflect corporate image. Company logos and colours can be incorporate into the system making it unique to the business.

Please contact us for more information.

“ The use of the Vigo Online Job Entry System has saved our Company £35,000 per year. ”

Ed Sanderson, Stephen Sanderson Transport Ltd

Visit Vigo at **LogisticsLink**
The exhibition for all supply chain solutions *live*



At Logistics Link Live, Vigo will be demonstrating its innovative Signature capture solution on Partner Psion Teklogix's stand (in demo area 6). Vigo's solution, which is a real time web-based system, allows consignments to be traced, tracking right through the supply chain to the point of delivery.

Jobs are shown in their planned order. Simple buttons are finger depressed by the driver to indicate that they have arrived, completed the job and departed. Functionality is available to photograph and/or scan the barcode at point of delivery to ensure that the right load has been delivered.

Direct capture of signatures is supported, with all information being transmitted back to the main system immediately, or if there is no GPRS signal, as soon as the equipment comes back into range. POD Signatures are available on a Vigo supplied website almost immediately.

Logistics Link Live, 13 - 14 May 2009, will be held in the Solar Warehouse on Magna Park, Leicestershire. The show is a unique opportunity to see live demonstrations in a real warehouse of products, systems and services for the supply chain.

We have a limited number of free entry tickets to the show - please contact us if you are interested.

For more information please visit: <http://www.logisticslink.co.uk/>

Inside this issue:

New OJE System	1
Logistics Link Live	1
Custom KPI Module	2
Free Training	2
Simpson Brothers	2
Invoice by Email	3
Upgrades & Installs	3
Organisational Chart	3

Vigo Software Ltd

The Old Forge, Hewell Lane, Tardebigge, Worcestershire, B97 6QL
Tel: 01527 551500 Fax: 01527 551509



New - Custom KPI Module

The Vigo Custom KPI module allows end-users to query the databases used by the Vigo System in order to create powerful Pivot Table based KPI reports with drill-down, export and charting capabilities. Any KPI view generated can be saved for future re-use.

The following example shows the total pallets and total weight of consignments for each customer grouped by week number.

Inv_scd	Week	Pts	Kilos	Pts	Kilos	Pts	Kilos	Pts	Kilos	Pts	Kilos	Pts	Kilos	Pts	Kilos	Pts	Kilos	Pts	Kilos			
AJW001	410	78300	850	132600	1252	262800	1286	261500	1282	268700	1251	270100	1180	236000	1118	262800	1138	271400	1196	275300	1411	313
ALT001	382	85500	864	181000	1250	285000	1064	255600	1194	275800	1196	266200	1143	248600	1347	293200	1254	273400	1298	272100	1411	278
ELB001	299	70600	974	201000	1262	267500	1173	261700	1266	276200	1223	271000	1241	278500	1124	243600	1138	238800	1118	246200	1196	256
IPF001	465	90000	907	180400	1212	253200	1116	243800	1232	271700	1261	285900	1196	257800	1467	298900	1124	244700	1167	255400	1261	287
LXT001	379	60200	1001	219500	1283	273800	1262	283200	1294	273600	1164	248500	1281	303000	1362	296200	1226	296300	1211	256900	1241	292
MRF001	497	110800	974	195000	1268	289500	1295	274900	1393	273600	1262	312800	1246	301700	1208	267700	1218	255400	1083	260000	1264	256
NSK001	372	92300	865	183000	1199	262700	1253	303000	1418	292000	1193	268100	1293	294800	1217	257500	1411	314400	1248	295900	1126	254
Grand Total	2804	595700	6345	348600	8726	890000	8443	895900	9039	956600	8660	946300	8579	920500	8773	920000	8509	892400	8321	821400	8874	939

The Pivot Grids are highly customisable. You can create very simple reports or quite complex reports with them. Reports can be edited and designed by adding fields from the database onto the Pivot Grid. It is possible to produce basic reports using the default options as well as more advanced reporting options.

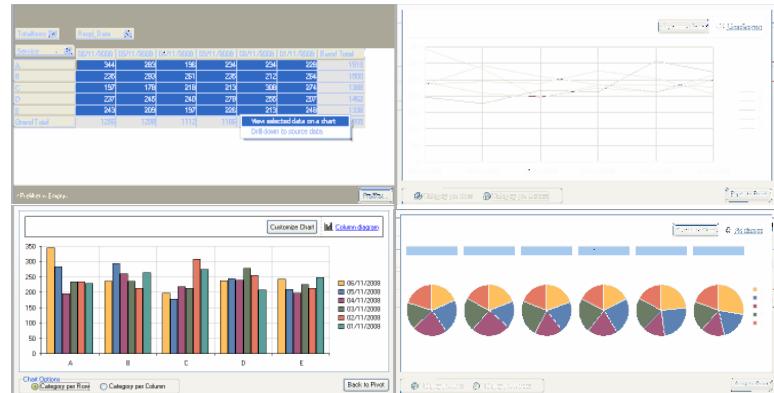
The Pivot Grid has four main sections on it where data fields can be placed so they appear on the Pivot Grid.

- The Data Area: This is where you place data fields that you wish to aggregate.
- The Row and Column Areas: Both of these areas are used for grouping the data you have added into the Data Area. It is possible to add multiple fields into either of these areas or use both areas at the same time.
- The Filter Area: This is where you place fields that you don't want to see anywhere, but might want to use as a basis for filtering the data that you can see.
- The 'Select Item' tab: This tab is separated into three sections; available fields, selected fields and the properties of the currently highlighted selected field.

As well as displaying your data on a Pivot Grid, it is possible to present it in the form of a chart.

To plot data on a chart, simply highlight the data you wish to plot either by dragging across the cells or using a combination of ctrl and shift clicking and then right click and choose 'Plot on Chart' from the popup menu.

The type of charts available are: Chart, Bar, Line, Area and Pie:



The data displayed can be filtered, grouped and sorted.

The data from the Pivot Grid, Chart View or Drill-Down can be exported in Excel format simply by choosing the Export option from the File Menu. The Pivot Grid and Drill Down views will export in the same format as they are on the screen.

The data from the Pivot Grid, Chart View or Drill-Down can be printed by choosing the Print option from the File Menu.

Once you have designed a Pivot Grid you can save the layout to a file for future use.

To load a file simply choose 'Load View From File' from the 'View' menu. Double click on a file to load its view.

This is only a brief overview of what this software can do. Please contact us for more information.

Free Training



Vigo offers half day training session on their Vigo Depot system, Haulage system and Warehouse systems FOC in our newly refurbished conference rooms located at the Vigo Offices in Bromsgrove.

If this is of interest to you or members of your team, please inform us by emailing support@vigosoftware.com this will enable us to judge the number of interested people and arrange suitable days.

Customer Focus: Simpson Brothers Ltd

Simpson Brothers recently implemented Vigo's integrated WMS and TMS solutions. Adrian Simpson, the General Manager of Simpson Brothers reports; "we are finding great resource savings in the use of Vigo, as a single system for our traffic and warehouse management, as well as its superb integration with other software, including accounts packages, other partners' software and of course the hub"

Simpson Brothers were established in 1919 and have grown from a two ex. Military vehicle operation transporting coal and coke in and around the Tyne Valley, to now operating a fleet of over 100 articulated vehicles from the distribution centre on the Drum Industrial Estate in County Durham along with satellite depots at Ackworth, Bardon and Leicester.

Simpson Brothers also utilise Vigo web services including online job entry, pods online and webwarehouse.

Vigo is very pleased to supply the complete end to end solution to such a prestigious Company.





Invoice by Email

Did you know it is now possible to send invoices from your Vigo TMS or DMS system by email? The Invoice by Email module will save you time, labour and resource costs by enabling you to send invoices electronically. The program will also let you track your progress by allowing you to see what invoices were sent and when in a number of different views.

The function links into the 'Accounts' section in your Vigo system. You can assign an email address to each customer to allow invoices to be emailed directly through your standard email client.

In terms of cost savings, for a Depot invoicing 1000 customers, the monthly savings would be approximately the following:

1000 x price of 2nd class stamp = £270.00
 1000 x cost of good quality paper = £7.20
 1000 x envelopes = £15.98
 Monthly saving on materials = £293.18



If labour is included in this calculation
 24 hours (3 days) at a rate of £5.73 = £137.52
 Total financial save per month = £430.70

This results in a total estimated annual cost on 1000 invoices (excluding any credit notes) of **£5,168.40**. For 500 invoices this is a cost of £2,584.20 and for 250 invoices a cost of £1292.10.

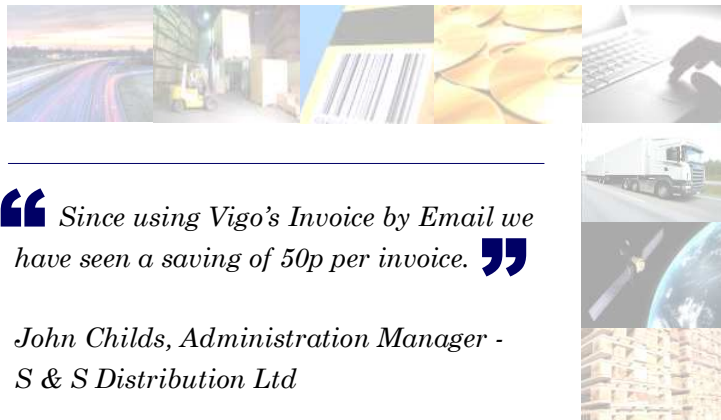
Also take into account the positive environmental effect of reducing paper usage.

The Vigo Invoice by Email software including 3 layouts and 12 months increase in support (@ £5 per month) = £890.00.

The software will have paid for itself (based on 1000 invoices) in just 2 months!

Just some of the upgrades and new installs in the last quarter...

- Viamaster: Linked Traffic Management & Warehouse Management Systems
- TPS Healthcare: Traffic Management, Bay Manager & Signature Capture Solutions
- Bartrums Road Services: Wifi Warehouse Management System linked to their existing Vigo Traffic System
- Arthur Oakley Ltd: Depot Management System & Signature Capture solutions
- Atchison Topeka Limited: Vigo Reverse Logistics System added to their existing Vigo TMS, WMS & Bay Management Systems



“ Since using Vigo’s Invoice by Email we have seen a saving of 50p per invoice. ”

John Childs, Administration Manager - S & S Distribution Ltd

Vigo Organisational Chart

Support & Programming requests

01527 551500

Support@vigosoftware.com

Customer Service / AOB:

Ian.Merry@vigosoftware.com

cc: Janis.Taylor@vigosoftware.com

Accounts related queries:

01527 551500 (ask for Accounts)

Accounts@vigosoftware.com

Sales related queries:

01527 551500 (ask for Sales)

Sales@vigosoftware.com

